

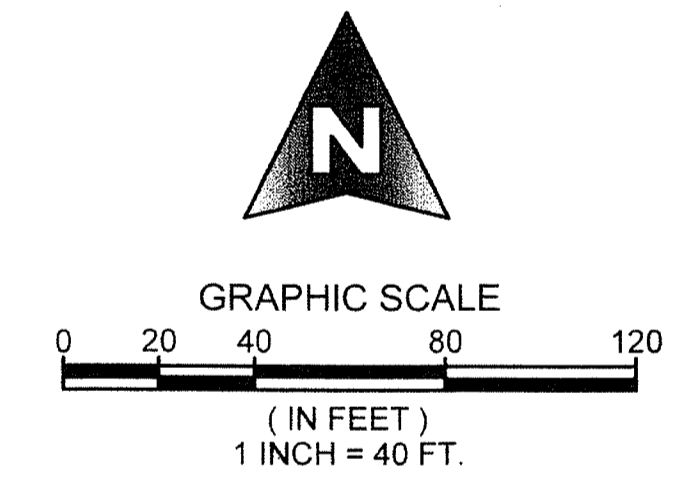
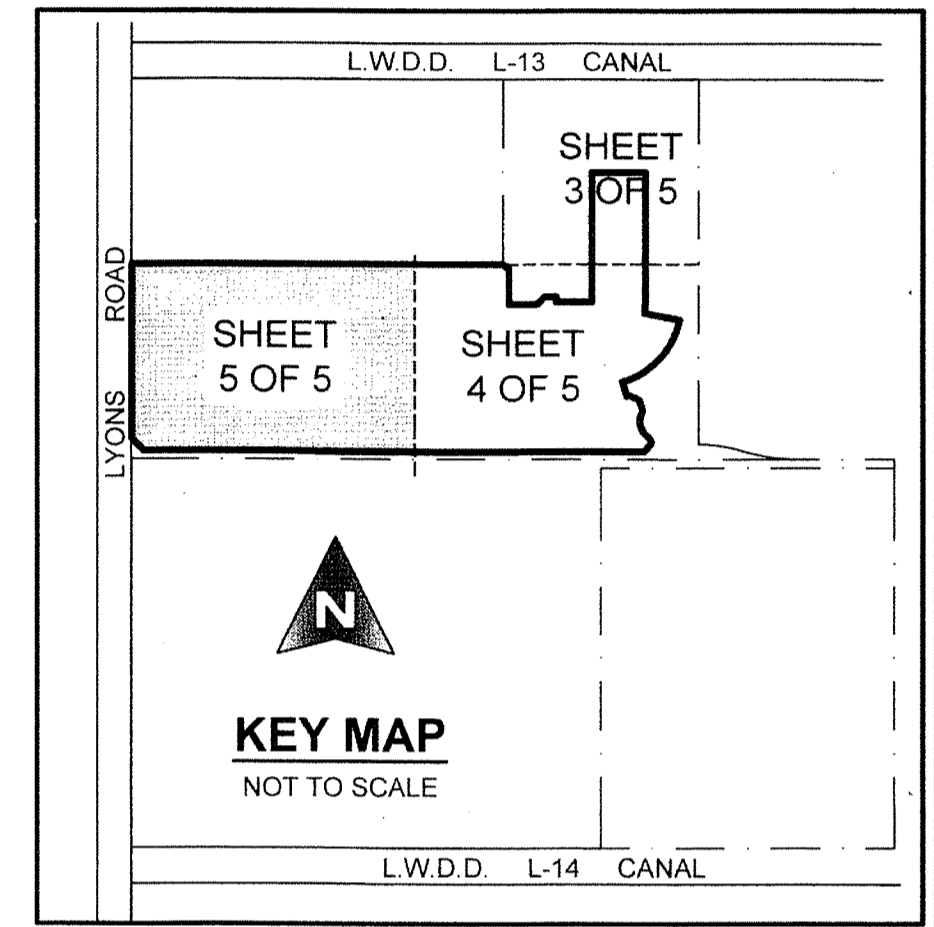
0980-002

ANDALUCIA PUD PLAT 2

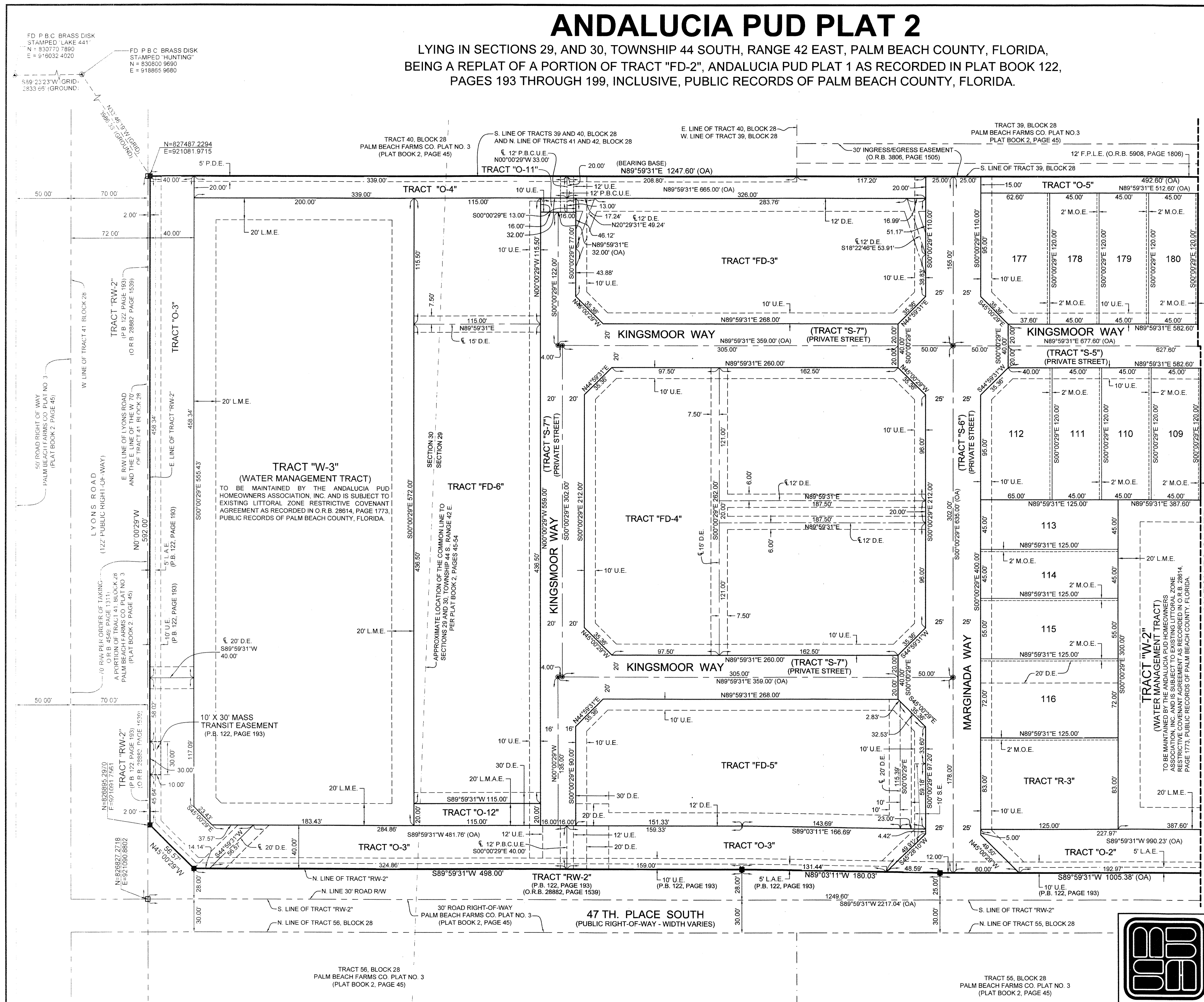
LYING IN SECTIONS 29, AND 30, TOWNSHIP 44 SOUTH, RANGE 42 EAST, PALM BEACH COUNTY, FLORIDA,
BEING A REPLAT OF A PORTION OF TRACT "FD-2", ANDALUCIA PUD PLAT 1 AS RECORDED IN PLAT BOOK 122,
PAGES 193 THROUGH 199, INCLUSIVE, PUBLIC RECORDS OF PALM BEACH COUNTY, FLORIDA.

100

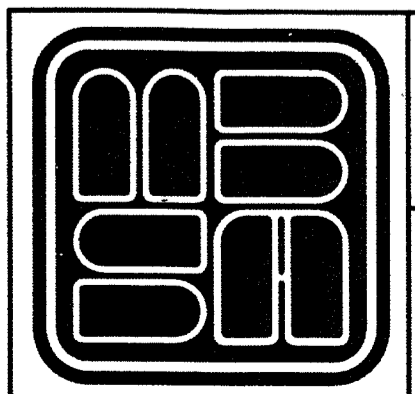
COUNTY OF PALM BEACH)
STATE OF FLORIDA) SS
THIS PLAT WAS FILED FOR RECORD AT)
M. THIS) DAY OF)
RECORDED IN PLAT BOOK NO.)
ON PAGE) THRU)
SHARON R. BOCK,
CLERK AND COMPTROLLER
BY:) D.C.



COORDINATE NOTE:
STATE PLANE COORDINATES SHOWN ARE GRID DATUM,
NAD 83 1990 ADJUSTMENT, FLORIDA EAST ZONE,
COORDINATE SYSTEM 1983 STATE PLANE, TRANSVERSE
MERCATOR PROJECTION
LINEAR UNIT = US SURVEY FEET
ALL DISTANCES ARE GROUND
SCALE FACTOR = 1.00022328
GROUND DISTANCE X SCALE FACTOR = GRID DISTANCE
N 89°59'31"E (PLAT BEARING) -00°56'20" COUNTER-CLOCKWISE ROTATION
PLAT TO GRID
N 89°03'11"E (GRID BEARING)
THE NORTH LINE OF TRACTS 41 AND 42, BLOCK 28, PALM BEACH
FARMS COMPANY PLAT NO. 3 (PLAT BOOK 2, PAGES 45-54)



SHEET 5 OF 5



MICHAEL B. SCHORAH & ASSOCIATES, INC.
1850 FOREST HILL BLVD., SUITE 206
WEST PALM BEACH, FLORIDA 33406
EB# 2438 TEL. (561) 968-0080 FAX. (561) 642-9726 LB# 2438

ANDALUCIA PUD PLAT 2